

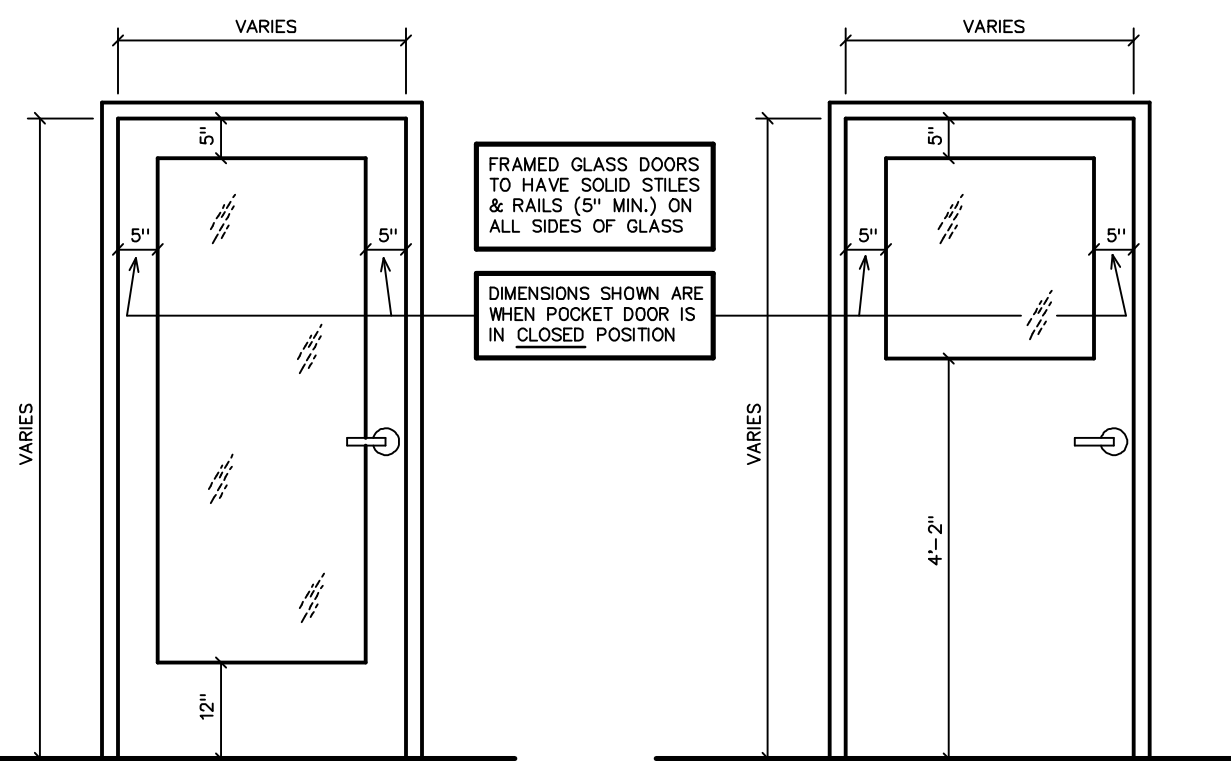
DOOR SCHEDULE					
SYM	QTY	SIZE	THK	DESCRIPTION	REMARKS
A	4	--	--	EXISTING DOOR	VERIFY THRESHOLD DETAIL AT EXTERIOR DOORS - SEE DETAIL 'CC' BELOW
B	2	3'-0" x 6'-8"	1 3/4"	SOLID CORE	
C	2	3'-0" x 6'-8"	1 3/4"	SOLID CORE	w/ GLASS - SEE ELEVATION 'AA' BELOW
D	1	3'-0" x 6'-8"	1 3/4"	SOLID CORE	w/ GLASS - SEE ELEVATION 'AA' BELOW LCN SLMLINE AUTO-CLOSER / SATIN CHROME
E	1	3'-0" x 6'-8"	1 3/4"	SOLID CORE	w/ GLASS - SEE ELEVATION 'BB' BELOW LCN SLMLINE AUTO-CLOSER / SATIN CHROME
F	1	3'-0" x 6'-8"	1 3/4"	SOLID CORE PAIR OF DOORS	PAIR OF 1'-6" DOORS
G	1	3'-0" DOOR w/ 2'-8" x 6'-8" CLEAR OPENING	1 3/8"	SOLID CORE POCKET DOOR	NOTE 1 3/8" DOOR THICKNESS - DOOR TO EXTEND 3" INTO OPENING (w/ 3/2" CLEAR) - PROVIDE H.C. ACCESSIBLE PULLS FROM TRIMCOY #1194-2 (OR EQUAL) w/ GLASS - SEE ELEVATION 'AA' BELOW

DOORS & FRAMES: *ALL NEW INTERIOR DOORS ARE TO BE FLUSH PARTICLEBOARD CORE (EXCEPT AS NOTED BELOW FOR FRAMED GLASS DOORS)

- WITH STAIN GRADE (MAPLE) VENEER (FINISH AS SPECIFIED BY INTERIOR DESIGNER)
- ALUMINUM DOOR & WINDOW FRAMES (VERIFY FINISH) AS MANUFACTURED BY WESTERN INTEGRATED MATERIALS (962) 854-2823 ALL DOOR & WINDOW FRAMES TO BE FINISHED WITH 2" WIDE FACE TRIM
- HARDWARE:
 - PASSAGE LATCHES - SCHLAGE NEPTUNE (AL) SERIES-LEVER TYPE) #626 SATIN CHROME FINISH
 - HINGES - 1 1/2" PAIR MCKINNEY 4 1/2" BUTTS
 - FURNISH BALL-TYPE WALL BUMPERS (TYP., AS DIRECTED). WHERE CONDITIONS DICTATE OTHERWISE, PROVIDE FLOOR STOPS AS DIRECTED BY ARCHITECT.
 - FURNISH ACOUSTICAL LEATHER STRIPPING ON DOORS TO ROOMS 5, 8 & 18
 - FURNISH PRIVACY LOCKS FOR ROOMS 5 & 18 (ALSO PROVIDE H.C.P. ACCESSIBLE THUMB-TURN DEADBOLT w/ OCCUPIED/UNOCCUPIED INDICATOR)
 - FURNISH KEYPED ENTRANCE/OFFICE LOCKS FOR ROOMS 17
 - PROVIDE EXTERIOR GRADE LOCKS (MATCH BUILDING STANDARD) ON ALL TYPE 'A' DOORS
 - ON TYPE 'B' DOORS AT THE TOILET ROOMS, PROVIDE 1/4" THICK SYMBOLS AS SPECIFIED BELOW. SYMBOLS SHALL BE OF A COLOR (AS SPECIFIED BY INTERIOR DESIGNER) WHICH IS DISTINCTLY DIFFERENT FROM THAT OF THE DOOR. CENTER OF SYMBOL SHALL BE CENTERED ON THE DOOR AT A HEIGHT OF 60". ALSO PROVIDE A WALL SIGN ON THE STRIKE SIDE OF THE DOOR, IDENTIFYING THE ROOM AS AN ACCESSIBLE UNISEX TOILET ROOM. SIGN INFORMATION SHALL BE PROVIDED IN RAISED LETTERS AS WELL AS BRAILLE. MOUNT SIGN CENTERED AT 60" ABOVE FINISHED FLOOR. ALL SYMBOLS, SIGNS & THEIR INSTALLATION SHALL BE PER CALIFORNIA BUILDING CODE, SECTIONS 11186.6 & 11176.5.1.

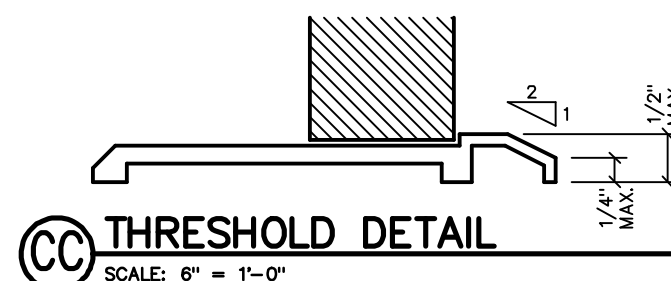
ROOMS #5 & 18 - UNISEX TOILET

EQUILATERAL TRIANGLE w/ VERTEX UP AND SUPERIMPOSED ON CIRCLE w/ 1/2" DIAMETER



AA DOOR w/ TEMPERED GLASS SCALE: 1/2" = 1'-0"

BB DOOR w/ TEMPERED GLASS SCALE: 1/2" = 1'-0"



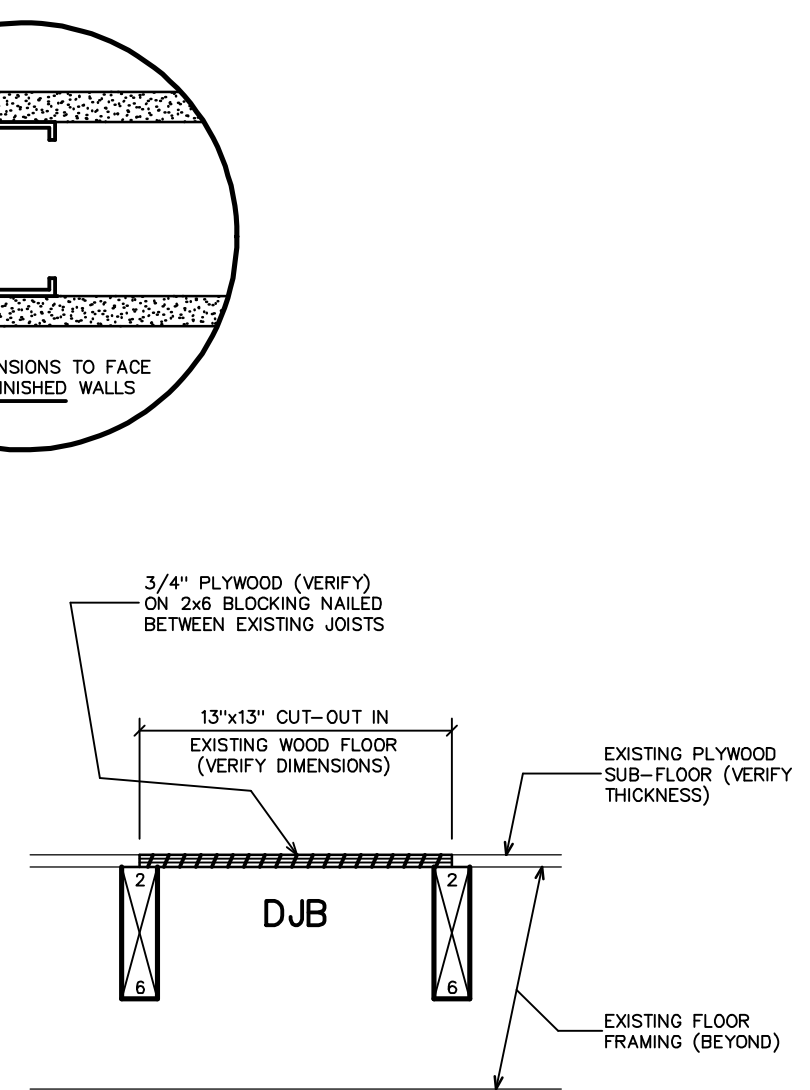
CC THRESHOLD DETAIL SCALE: 6" = 1'-0"

SYMBOLS & ABBREVIATIONS

(Symbol)	EXISTING WALLS TO REMAIN
(Symbol)	EXISTING WALLS, DOORS, FIXTURES, ETC. TO BE REMOVED
(Symbol)	EXISTING WALL FRAMING TO REMAIN w/ ACOUSTICAL SHEATHING & SOUND ATTENUATION BLANKETS ADDED AS SPECIFIED BELOW
(Symbol)	NEW FULL HEIGHT (2" ABOVE CLG.) PARTITIONS - 2x4 WOOD STUDS @ 16" O.C. (U.O.N.) SHEATH WITH 5/8" GYPSUM BOARD. (METAL STUDS AS ALTERNATE)
(Symbol)	NEW PARTIAL HEIGHT PARTITIONS - SAME AS ABOVE. SEE ELEVATIONS.
(Symbol)	NEW FULL HEIGHT ACOUSTICAL PARTITIONS - SAME AS ABOVE, EXCEPT ONE SIDE USING "QUIET-ROCK QR-530" (5/8" ACOUSTICAL SHEETROCK)*. FILL VOIDS w/ "THERMAFIBER" 3"-CREASED SOUND ATTENUATION FIRE BLANKETS. ** (AT CURVED WALLS, USE 1/4" SHEET ROCK OVER 1/2" SOUNDBOARD)**
(Symbol)	NEW FULL HEIGHT DBL. ACOUSTICAL PARTITIONS - SAME AS ABOVE, EXCEPT BOTH SIDES USING "QUIET-ROCK QR-530" (5/8" ACOUSTICAL SHEETROCK). FILL VOIDS w/ "THERMAFIBER" 3"-CREASED SOUND ATTENUATION FIRE BLANKETS. ADD 6" FIBERGLAS BATTS ABOVE FINISHED CEILING - SEE SHEET A2.
(Symbol)	CABINERY, FURNITURE OR EQUIPMENT NOT A PART OF THIS CONTRACT
(Symbol)	DIRECTION OF VIEW
(Symbol)	ELEVATION DESIGNATION
(Symbol)	SHEET NUMBER
(7)	ROOM NUMBER
(B)	DOOR SYMBOL - SEE DOOR SCHEDULE, THIS SHEET
N.I.C.	NOT IN CONTRACT
A.F.F.	ABOVE FINISHED FLOOR
U.N.O.	UNLESS NOTED OTHERWISE

COORDINATE ALL DRAWINGS REGARDING RECESSED ITEMS

U.N.O. - DIMENSIONS ARE TO FACE OF FINISHED WALLS



E 'DJB' FRAMING SCALE: 1 1/2" = 1'-0"

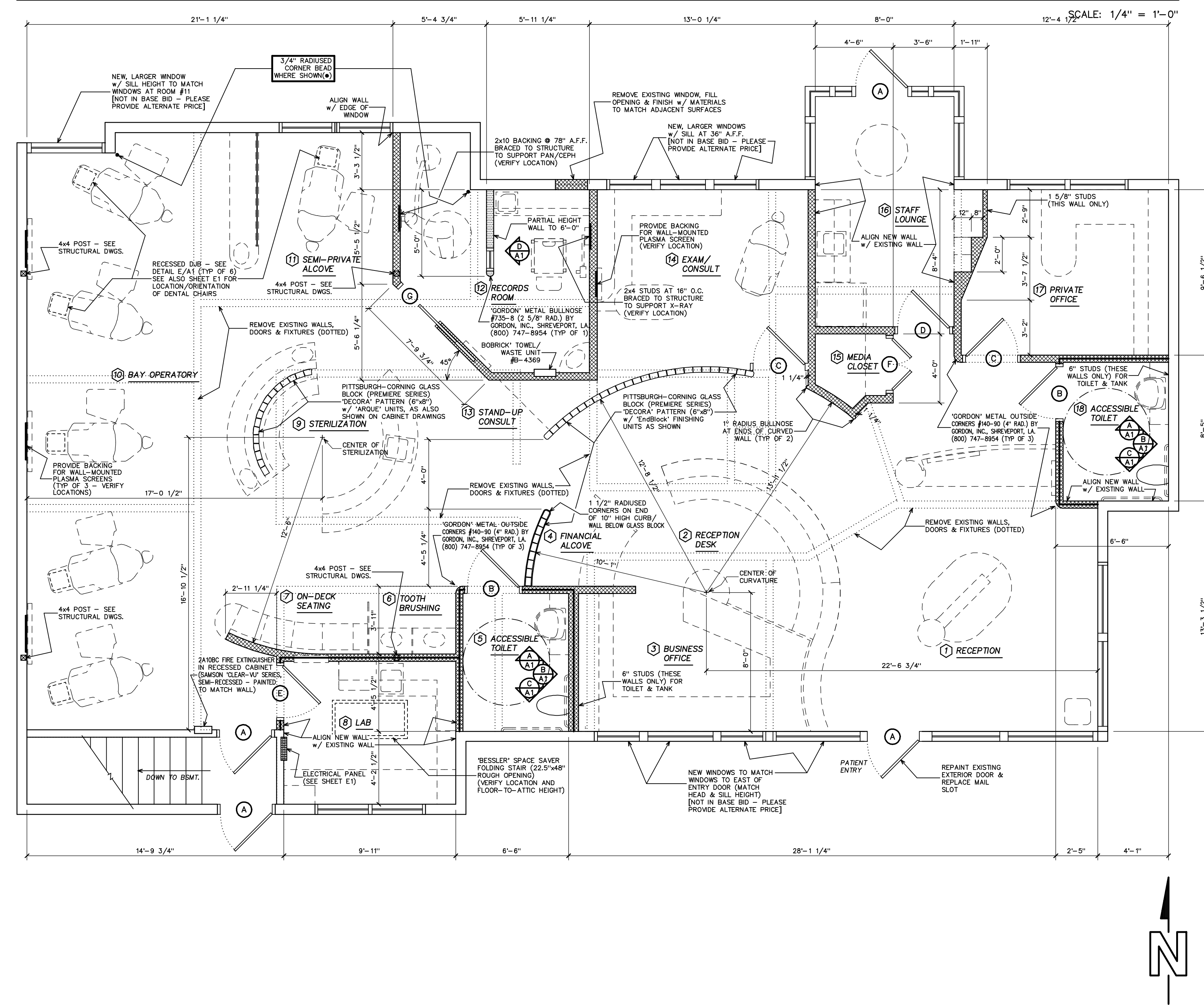
HANDICAP TOILET ROOM ELEVATIONS

SCALE: 1/2" = 1'-0"

- WATER CLOSET: DURAVIT 'DARLING' #020709 TOILET (1.6 GPF)
- LAVATORY: AMERICAN STANDARD 'MEZZO' SINK #9960.001 w/ SINGLE LEVER FAUCET
- GRAB BARS: BOBRICK SERIES #5806
- ACCESSORIES: TOWEL DISPENSER/ WASTE RECEPTACLE: BOBRICK #B-4369
- COMBINATION SEAT COVER/ TOILET PAPER DISPENSER/ FEMININE NAPKIN DISPOSAL: BOBRICK #B-3574
- MIRROR: BY CABINET MAKER

D VIEW WINDOW AT RECORDS ROOM SCALE: 1/2" = 1'-0"

ARCHITECTURAL FLOOR PLAN



REVISIONS BY

DESIGN FOR HEALTH

250 DUFOUR STREET, SANTA CRUZ, CA. 95060
 PHONE: (831) 425-1869 FAX: (831) 425-3905

AN ORTHODONTIC OFFICE FOR

KENNETH A. SHIMIZU, DDS, MSD

877 WEST FREMONT AVENUE SUITE G-1 SUNNYVALE, CALIFORNIA 94087

DATE: 20 MAY, 09
 SCALE: AS NOTED
 DRAWN: MBG/RMH
 PROJECT: 20812
 SHEET: A1