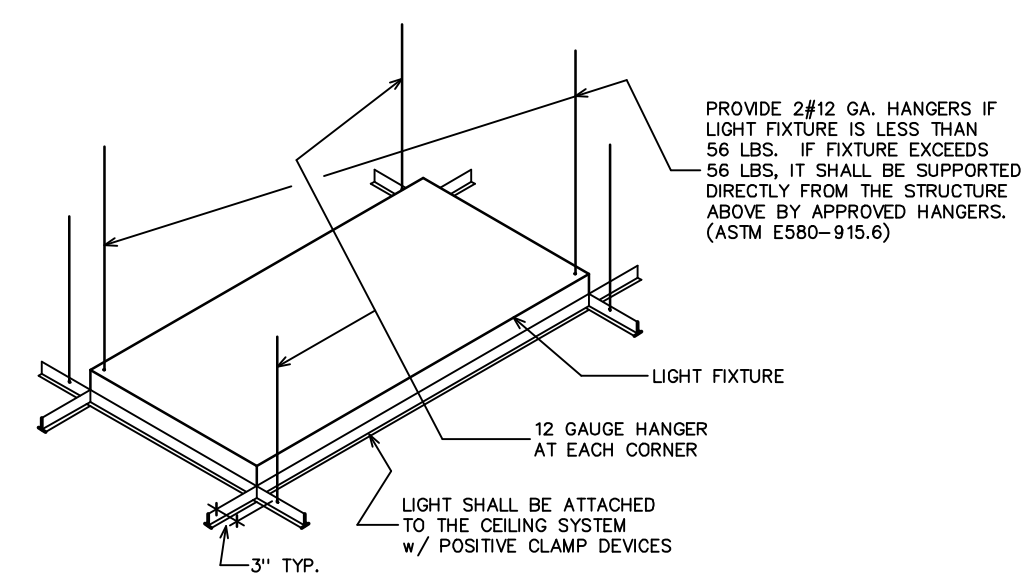


MECHANICAL SYSTEM NOTES

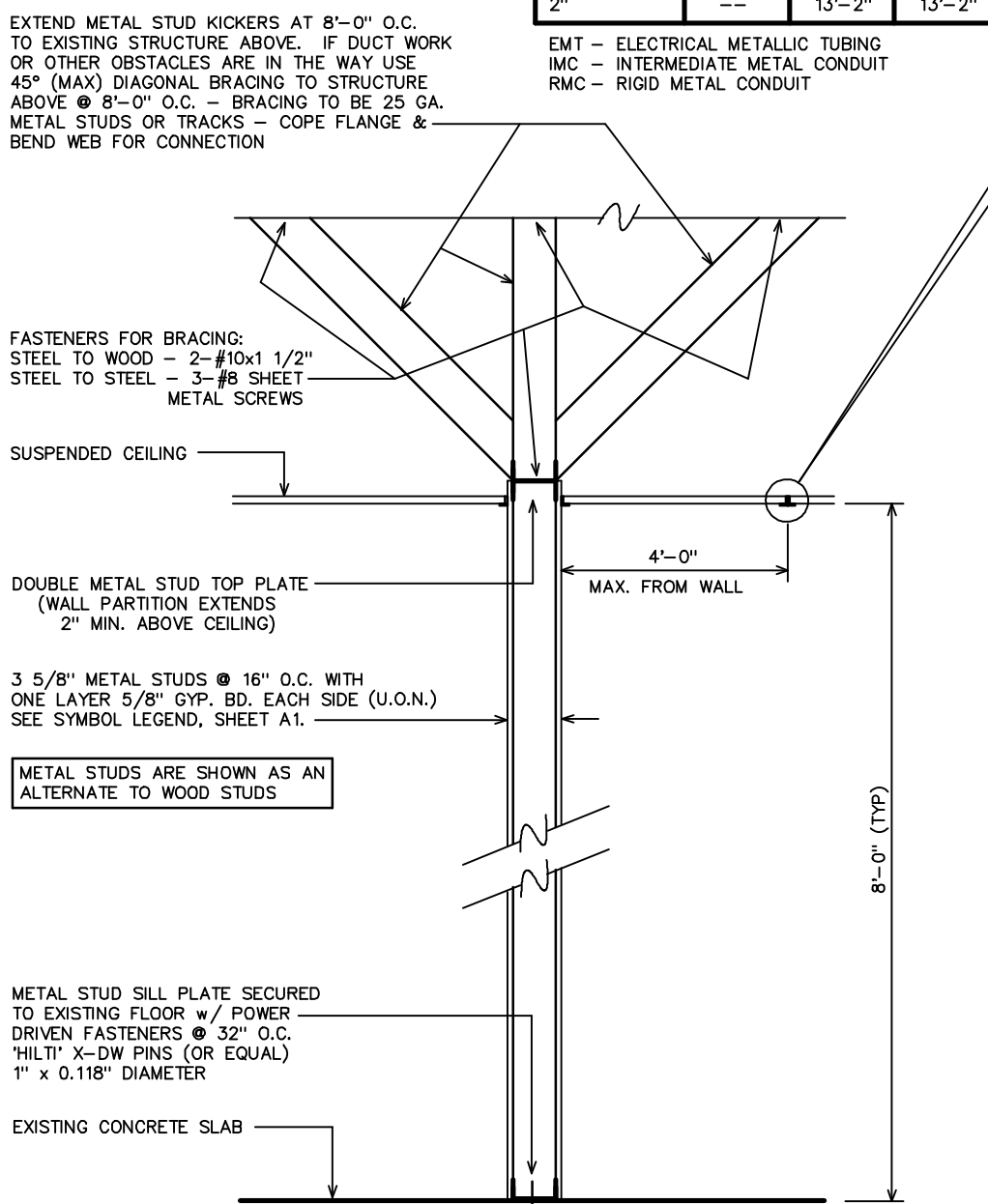
- A NEW SUPPLY AND RETURN HVAC SYSTEM SHALL BE DESIGNED AND CONNECTED TO THE EXISTING BUILDING SYSTEM.
A SHOP DRAWING SHOWING THE PROPOSED LOCATION OF ALL DIFFUSERS, EXHAUST FANS, RETURNS (INDIVIDUAL RETURNS IN EACH ROOM OR SPACE - NOT A SINGLE CENTRAL RETURN), ACCESSIBLE CONTROLS, CONTROL WIRING, ETC. SHALL BE SUBMITTED TO THE ARCHITECTS FOR THEIR APPROVAL WITHIN 2 WEEKS OF THE TIME THE CONSTRUCTION CONTRACT IS AWARDED. (VERIFY FINAL LIGHTING LAYOUT) ARCHITECT SHALL HAVE THE RIGHT TO HAVE THE MECH. SUB-CONTRACTOR MAKE ANY FIELD CHANGES THEY DEEM NECESSARY IF THEY HAVE NOT HAD AN OPPORTUNITY TO REVIEW THE SHOP DRAWINGS.
ALL DUCTWORK TO BE INSULATED AND SYSTEM SHALL INCLUDE OTHER MANDATORY FEATURES FOR MECHANICAL ENERGY COMPLIANCE.
THE CONTRACTOR SHALL VISIT THE SITE SO AS TO EVALUATE THE EXISTING CONDITIONS AND DETERMINE WHAT WORK WILL BE NECESSARY IN ORDER TO PROVIDE A COMPLETE AND EFFECTIVELY ZONED HVAC SYSTEM.
- THE REMAINDER OF THE HVAC SYSTEM: THE INSULATED SUPPLY AND RETURN DUCTS, CEILING DIFFUSERS, CONTROL SYSTEM WITH A 7-DAY CLOCK AND THE EXHAUST FANS ARE A PART OF THIS CONTRACT. FURNISH A SEPARATE BID TO INCLUDE ALL OF THE ELEMENTS TO COMPLETE THE HVAC SYSTEM.
- A DESCRIPTION OF THE PROPOSED SYSTEM SHALL BE SUBMITTED WITH THE BID SO AS TO BE EVALUATED FOR ITS PERFORMANCE CAPABILITIES AND FOR COMPARISON WITH OTHER PROPOSED SYSTEMS.
- THE CONTRACT SHALL INCLUDE TESTING & BALANCING OF THE SYSTEM.
- EXHAUST FAN SCHEDULE:
ROOM FANS (w/ BACKDRAFT DAMPERS)
5, 8, 16 & 18 PANASONIC #FV-15V04 (150 CFM) & BSMT. MECH. RM.
9 VERIFY SIZE - SEE NOTE #6 BELOW
[FAN AT BASEMENT TO BE INTERCONNECTED w/ COMPRESSOR SO AS TO SWITCH ON AUTOMATICALLY WHENEVER COMPRESSOR IS OPERATING.]
NOTE: IN BASEMENT MECHANICAL ROOM, FURNISH A 36 SQ. IN. METAL DUCT TO THE EXTERIOR, STARTING AT 24" A.F.T. AND NEAR THE COMPRESSOR.
- PROVIDE EXHAUST VENT FROM VENT HOOD AS NOTED AT ROOM #8
- PROVIDE VENT TO BASEMENT FOR STERILIZER AT ROOM #9. COORDINATE w/ CABINET MAKER - SEE CAB. DWGS. W & X/C4
- CONSULT w/ LOW-VOLTAGE SUPPLIER/CONTRACTOR REGARDING COOLING REQUIREMENTS FOR ROOM #15.



SCALE: 1/2" = 1'-0" SIMILAR FOR OVP, BD, CEILING

MODEL #	ALLOWABLE LENGTH
VSA 12	1'-6" TO 2'-6"
VSA 24	2'-6" TO 4'-0"
VSA 47	4'-0" TO 7'-0"
VSA 710	7'-0" TO 10'-0"
VSA 1012	10'-0" TO 12'-0"

TRADE SIZE	ALLOWABLE LENGTH		
	EMT	IMC	RMC
1/2"	3'-10"	4'-4"	4'-4"
3/4"	5'-2"	5'-7"	5'-7"
1"	6'-6"	7'-0"	7'-0"
1 1/4"	8'-6"	9'-0"	9'-0"
1 1/2"	9'-10"	10'-9"	10'-9"
2"	-	13'-2"	13'-2"



1 WALL ASSEMBLY DETAIL SCALE: 1/2" = 1'-0"

CEILING CONSTRUCTION

NOTE: FOR INFORMATION REGARDING LUMINOUS DIFFUSERS, SKY-LIGHTS & SPECIAL CEILING ASSEMBLIES, CONTACT: GORDON, INC., SHREVEPORT, LA. (800) 747-8954 OR NORTON INDUSTRIES (888) 357-2345

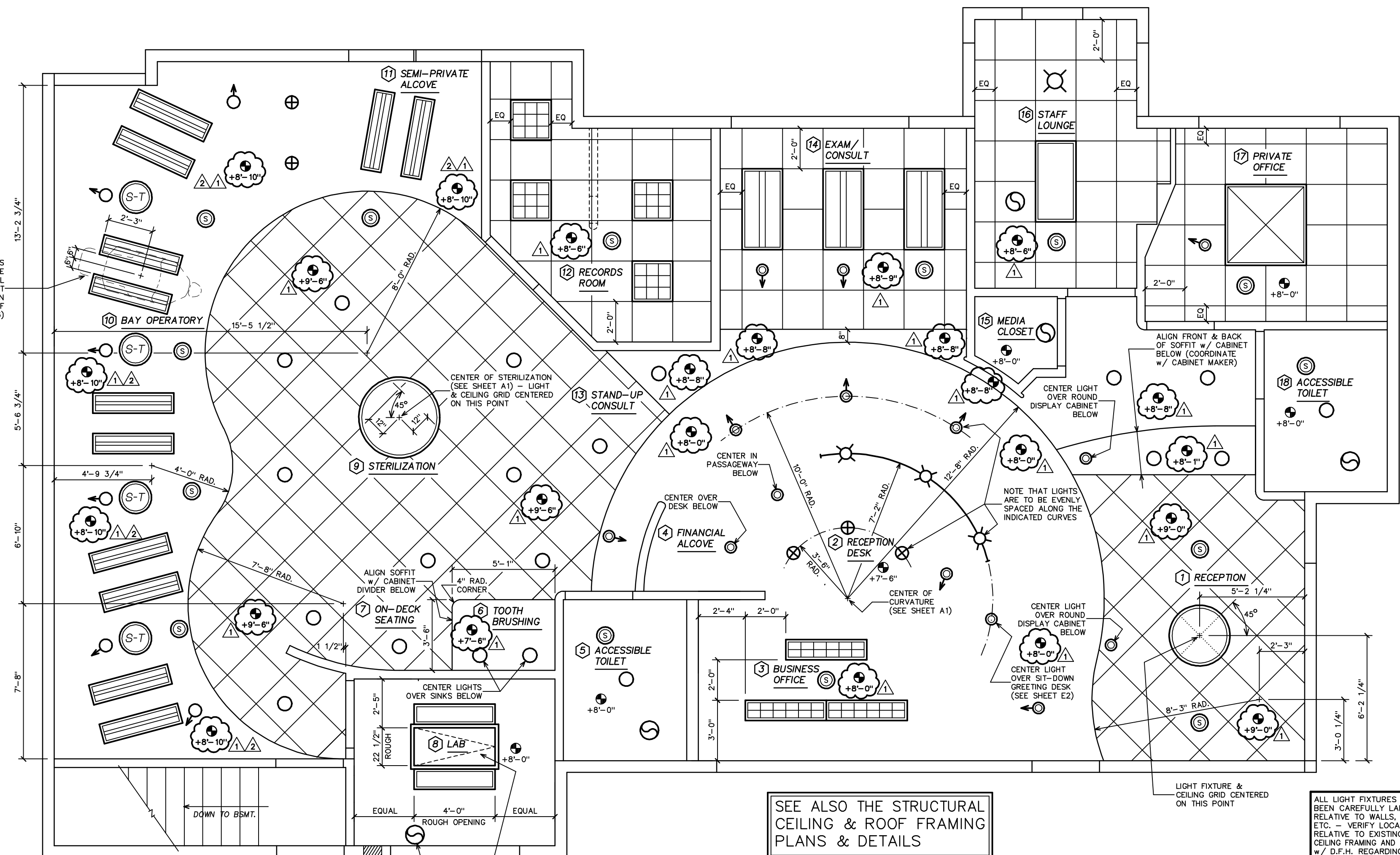
- CEILING IN ROOMS 2, 3, 4, 5, 6, 8, 10, 11, 13, 15 & 18 AND ALL CLOSETS & SOFFITS ARE TO BE GYPSUM BOARD. SEE SHEET 10-1.
 - EXCEPT AS NOTED ABOVE, ALL CEILING ARE TO BE SUSPENDED LAY-IN SYSTEM. FRAMING SHALL COMPLY w/ ASTM C-835. MATCHING WALL MOLDING SHALL DETACHABLY SUPPORT FRAMING. INSTALLATION SHALL COMPLY WITH ASTM C-836. FOLLOW MFR'S SPECIFICATIONS AND SEE ALSO SUSPENDED CEILING SUPPORT DETAIL ON THIS SHEET.
- NOTE: GRID ORIGIN DIMENSIONS ON PLAN.
- SUSPENSION SYSTEM: U.S.G. REGULAR LAY-IN T-BAR w/ 9/16" FINELINE-1/8" GRID (WHITE)
- TILE: U.S.G. 'GLACE' TILES 24"x24"x3/4" REGULAR LAY-IN # 708 (WHITE)
- CONTRACTOR TO PROVIDE ONE (1) FULL BOX OF EACH TYPE OF CEILING TILE FOR OWNER'S FUTURE USE.
 - AS NOTED ON SHEET E2, IT IS THE GENERAL CONTRACTOR'S RESPONSIBILITY TO FURNISH & INSTALL THE 'SKYFRAME' LUMINOUS DIFFUSER ASSEMBLY & FOIL REFLECTOR PLENUM. (SEE DETAIL 3/AZ ON THIS SHEET)
 - PROVIDE 'SOLA-TUBE' MODEL #290-DS DAYLIGHTING SYSTEM WHERE SHOWN. PHONE: (888) 765-2882 INCLUDE 'MUSON' CEILING DIFFUSER LOCAL CONTACT/SUPPLIER: GREENSPACE (831) 423-7200
 - SEE NOTE ON THE TITLE SHEET (TS) RE: PENETRATIONS & FIRE RESISTIVE HOODS AT LIGHT FIXTURES.
 - WHERE PARTIAL TILES ARE SHOWN (E.G., EDGES OF ROOM), TILES ARE TO HAVE A CUT REVEAL EDGE WHICH MATCHES THE WHOLE TILES.
 - AT THE BEGINNING OF THE PROJECT, PRIOR TO FRAMING WALLS, ALL CEILING HEIGHTS ARE TO BE VERIFIED RELATIVE TO NEW & EXISTING PIPES, DUCTS, ETC. ARCHITECT TO BE NOTIFIED IMMEDIATELY IF SUFFICIENT SPACE IS NOT AVAILABLE FOR PROPOSED LIGHT FIXTURES & OTHER CEILING ELEMENTS.

GENERAL NOTES

- ADDITIONAL INFORMATION WILL BE FOUND ON THE ELECTRICAL DRAWINGS, SHEETS E1 AND E2
- SEE THE INTERIOR DESIGN DRAWING, SHEET ID1, FOR ADDITIONAL INFORMATION.

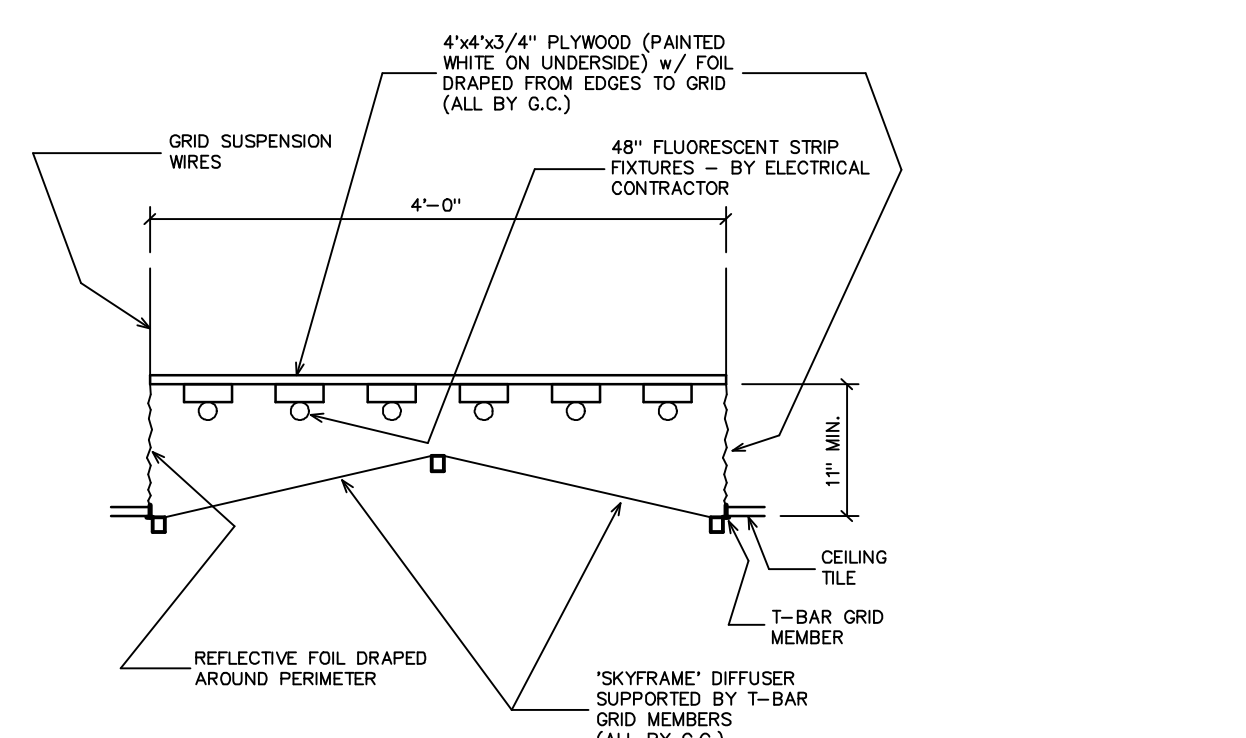
REFLECTED CEILING PLAN

SCALE: 1/4" = 1'-0"



LEGEND

- [Symbol] LIGHT FIXTURES - SEE SHEET E2 FOR SPECIFICATIONS
- [Symbol] CEILING EXHAUST FAN - SEE SHEET E1 AND MECHANICAL SYSTEM NOTES ON THIS SHEET
- [Symbol] CEILING MTD. SPEAKER - SEE SHEET E1 FOR MORE INFORMATION (NIC)
- [Symbol] FINISHED CEILING HEIGHT DESIGNATION (GRID HEIGHT WHERE REGULAR TILE SPECIFIED)
- [Symbol] 'SOLA-TUBE' THRU-ROOF DAYLIGHTING OPENING SEE SPECIFICATIONS UNDER CEILING CONSTRUCTION NOTES, ABOVE LEFT



3 'SKYFRAME' CEILING DETAIL SCALE: 3/4" = 1'-0"

REVISIONS BY
 3 JULY, 09 RMH
 8 JULY, 09 RMH

DESIGN FOR HEALTH
 250 DUFOUR STREET, SANTA CRUZ, CA 95060
 PHONE: (831) 425-1869 FAX: (831) 425-3905

AN ORTHODONTIC OFFICE FOR
KENNETH A. SHIMIZU, DDS, MSD
 877 WEST FREMONT AVENUE SUITE G-1
 SUNNYVALE, CALIFORNIA 94087

DATE: 20 MAY, 09
 SCALE: AS NOTED
 DRAWN: MBG/RMH
 PROJECT: 20812
 SHEET: AR